

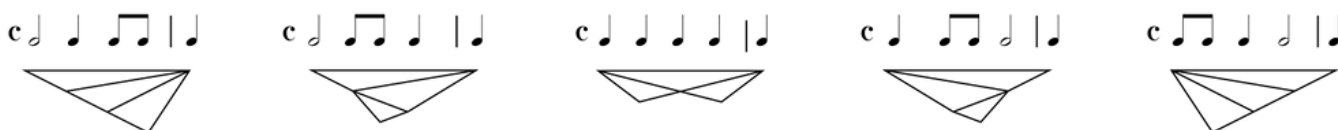
**MTO 26.4 Examples: Frederick, Review of Yust**

(Note: audio, video, and other interactive examples are only available online)

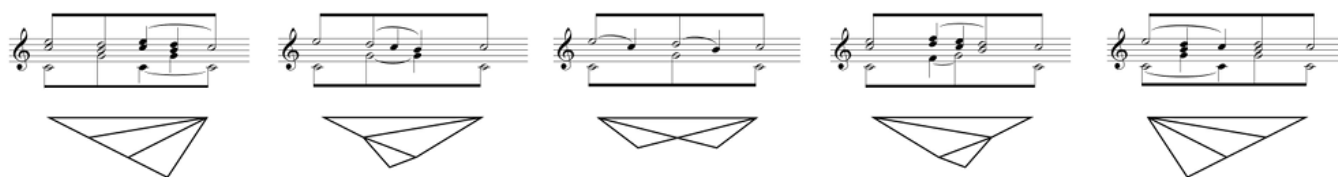
<https://mtosmt.org/issues/mto.20.26.4/mto.20.26.4.frederick.html>

**Example 1.** Temporal structures (MOPs) representing: (a) rhythm (after *Organized Time*, Example 4.2); (b) tonal structure (after Example 4.3); and (c) small formal structures (after Example 3.1)

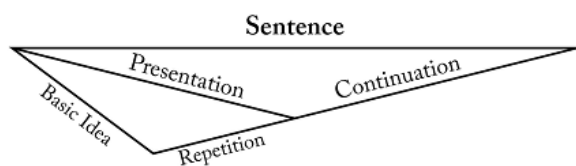
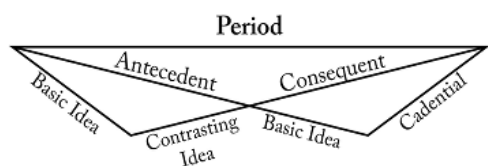
a.



b.



c.



**Example 2.** Syncopated rhythmic structure in the opening of Beethoven's String Quartet in F minor, op. 95 (*Organized Time*, Example 8.15a)

The image displays a musical score for the opening of Beethoven's String Quartet in F minor, op. 95. The score is written in F minor (three flats) and common time (C). It consists of two staves: a treble staff and a bass staff. The music begins with a piano (*f*) dynamic marking. The rhythmic structure is characterized by syncopation, with a 1:3 ratio in the first measure and a 2:1 ratio in the second measure. Below the score, a diagram illustrates the syncopated rhythmic structure with ratios 1:3 and 2:1.

**Example 3.** Analysis of Beethoven's String Quartet in F minor, op. 95, mm. 77–88 (*Organized Time*, Example 8.17); (a) syncopated hypermetric structure, and (b) a disjunction between hypermeter and form at the moment of recapitulation

a.

77 (... End of development)

Hypermeter:

81 Recapitulation!

1:2

3:5

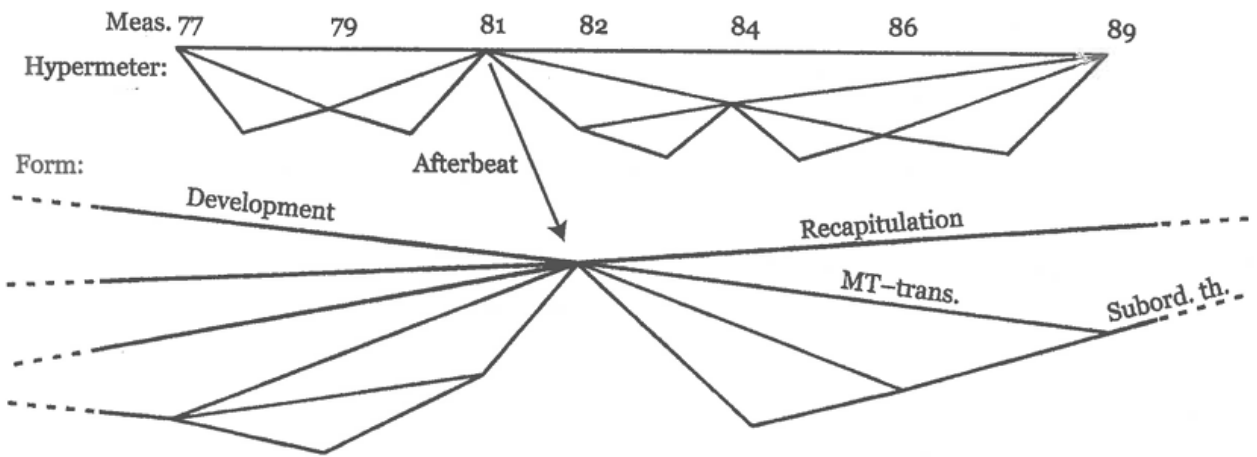
Contracted  $\times \frac{1}{2}$

85

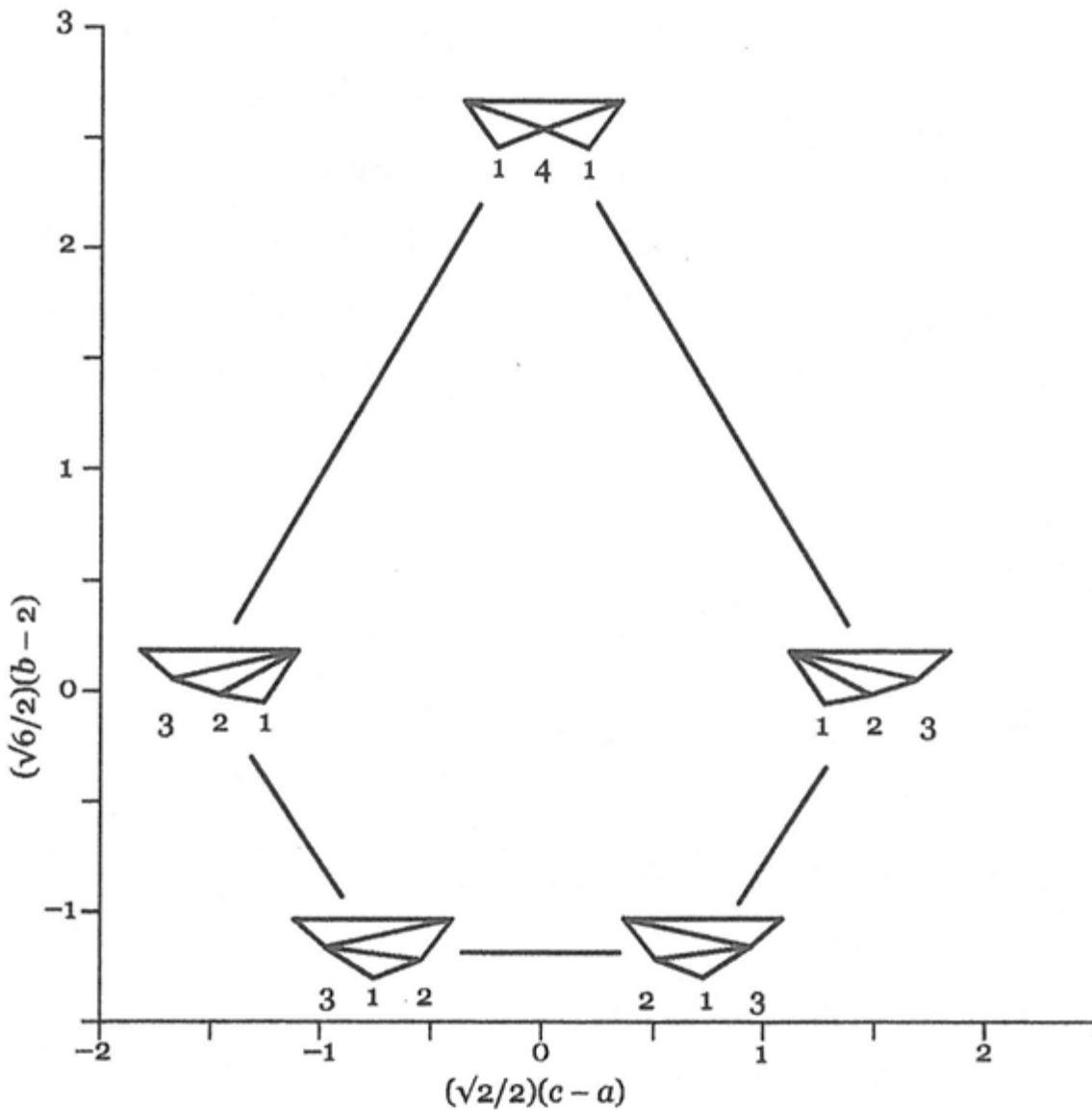
2:3

Expanded  $\times \frac{3}{2}$

Example 3b.

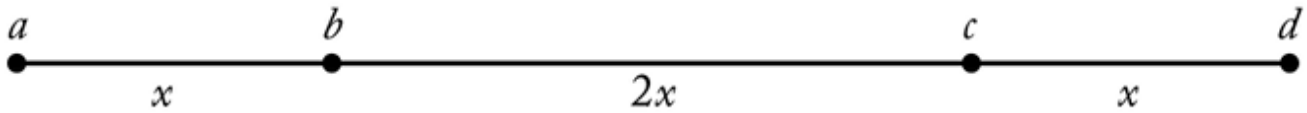


**Example 4.** The 3-associahedron relating the all possible 3-MOPs from Example 1 (*Organized Time*, Example 14.3c; "141" corrected from "414")

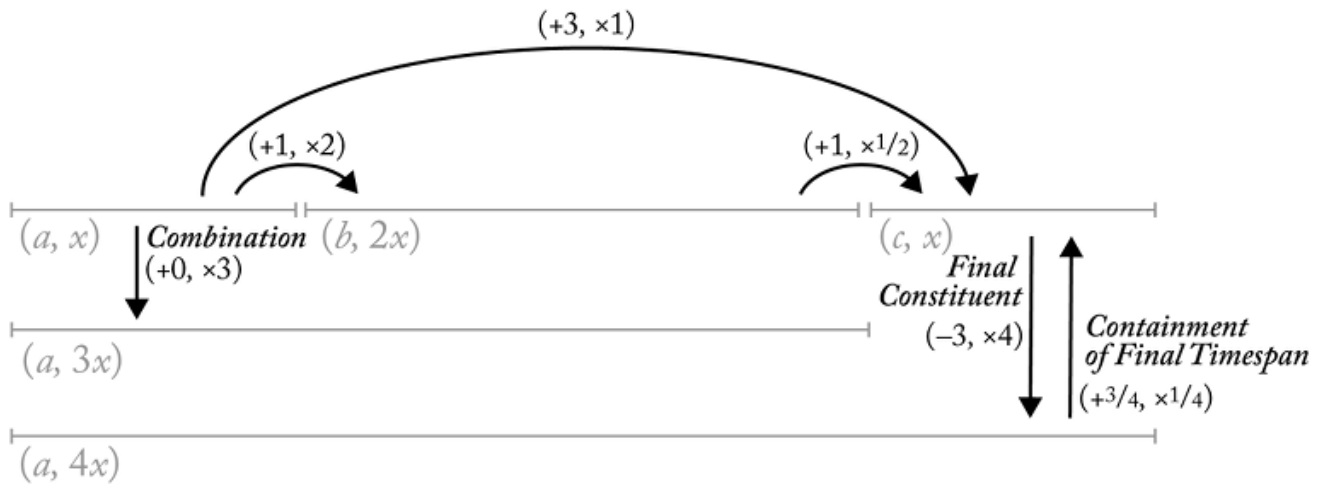


**Example 5.** Lewin's Timespan Interval GIS; (a) an abstract timespan divided into a pattern of short-long-short durations; (b) subsets of the timespan related using timespan intervals; and (c) the relationship between Lewin's intervals and Yust's MOP ratios using the syncope from Example 2

a.



b.



c.

