

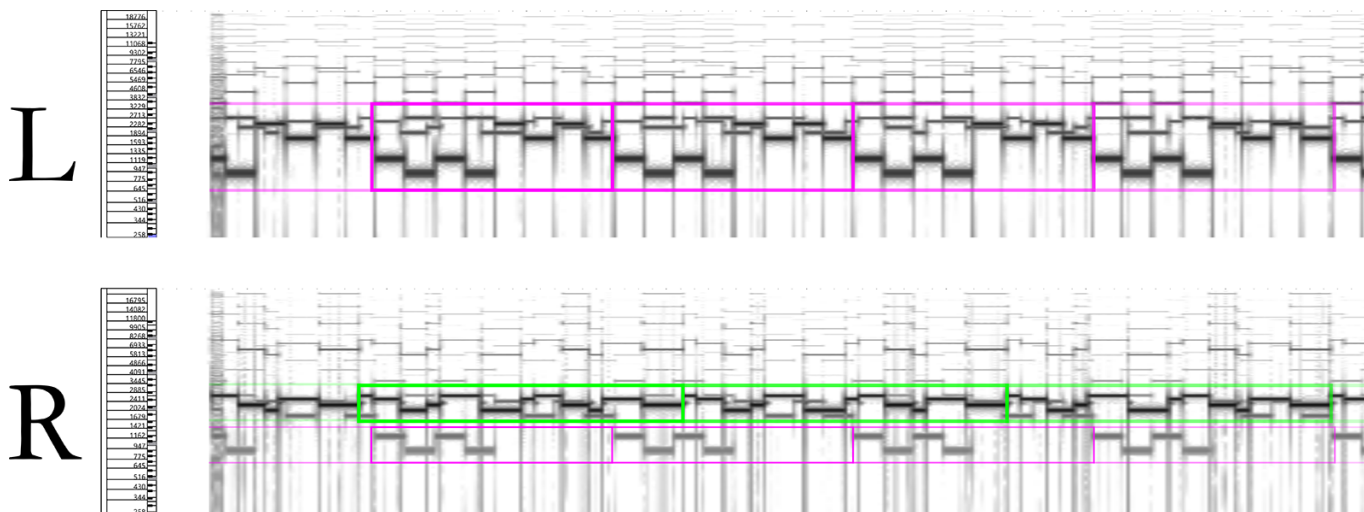


MTO 28.4 Examples: Kahrs, Review of Amy Cimini

(Note: audio, video, and other interactive examples are only available online)

<https://www.mtosmt.org/issues/mto.22.28.4/mto.22.28.4.kahrs.php>

Example 1. The opening of “Head Rhythm” from Maryanne Amacher’s *Sound Characters: Making the Third Ear*, with characteristic motives highlighted



Example 2. Transcription and analysis of combination tones in “Head Rhythm,” with audio slowed 4x. Red boxes identify the sounding pitches that create the difference tones; click on them to see my calculation of difference tones and to hear the direct juxtaposition of the sounded notes and the emergent pitch.

The image displays a musical transcription for "Head Rhythm" with analysis of combination tones. It consists of three parts:

- Left channel:** A musical staff in treble clef with a 2/4 time signature and a tempo marking of ♩ = 140. The notes are G4, A4, B4, C5, B4, A4, G4. A red box highlights the final two notes, B4 and A4.
- Right channel:** A musical staff in treble clef with a 6/8 time signature and a tempo marking of ♩ = 104. The notes are G4, A4, B4, C5, B4, A4, G4. A red box highlights the final two notes, B4 and A4.
- Combination Tones ("Eartones"):** A musical staff in bass clef showing two notes: G3 (the difference tone of B4 and A4) and F3 (the difference tone of C5 and B4). Red arrows point from the B4 and A4 notes in both channels to the G3 note, and from the C5 and B4 notes in both channels to the F3 note.

Example 4. Shared motives between *Living Sound* (Audio Example 3c) and preparatory tape (Audio Example 3d)

The image shows musical notation for Example 4, illustrating shared motives. It consists of two parts:

- Piano Accompaniment:** A grand staff with a treble clef and a bass clef. The right hand plays a series of chords: a triad of G4, A4, B4, followed by a triad of G4, A4, B4 with a sharp sign above the B4. The left hand plays a single note G3.
- Single Staff:** A treble clef staff showing a sequence of notes: G4, A4, B4 (grouped by a parenthesis), followed by G4, A4, B4, G4, A4, B4.